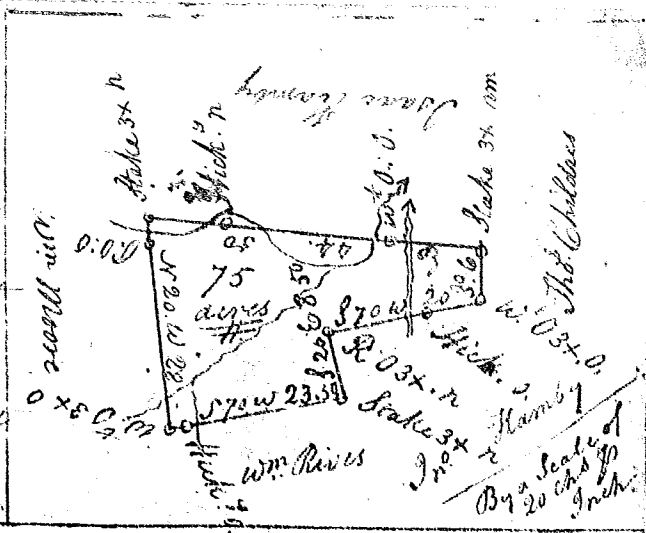


(41)

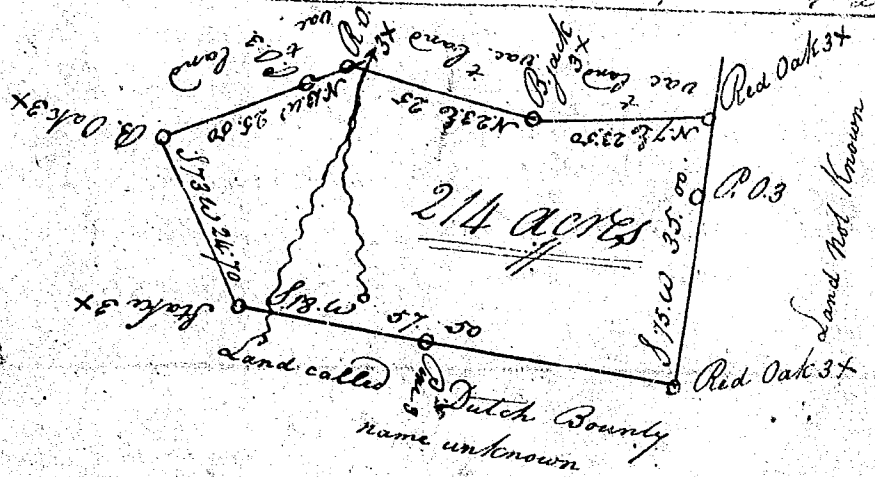
State of S. Carolina

Pursuant to a warrant from John Thomas Com. of Locations in Ninety Six district N. Saluda Dated the 25<sup>th</sup> day of Oct. 1790 I have laid out unto James W. Lindsay a tract of twenty five acres of Land Situate in S. District lying on Lick Creek the waters of Enoree River, Running S.W. & S.E. with Wm Rives & John Hamby's lands. S. with Tho. Childers land E. with Isaac Hamby's land & N.W. with Wm. Moores land and hath such shape & marks as the above plat Represents



Surveyed the 28<sup>th</sup> day of Oct. 1790

James W. Lloyd  
S. S.



State of S. Carolina

Pursuant to a warrant from John Thomas Esq. Com. of Locations N. Saluda Bearing date the 30<sup>th</sup> November 1791. I have admeasured and laid out unto John Owens a tract of Land containing two hundred and fourteen acres Situate in Said District on a Branch of Duncans Creek of the waters of Enoree River Bounded by a line Running N. 33 W. on Vacant land and by other lines as the above plat Represents Surveyed the 10<sup>th</sup> day of February 1792.

William Hunter  
S.